

## OUR SCHOOL FEES 2024-25 (inc VAT) PER TERM FROM JANUARY 2025

1/2

<b>NURSERY (FEES PER SESSION)</b>	<b>EYFE SCHEME</b>	<b>OUTSIDE EYFE</b>	<b>JUNIOR SCHOOL</b>
EYFE Session (8.30am to 11.30am)	Free*	£37.50	Reception: £3,570
Morning including lunch	£25.50	£62.00	Years 1 & 2: £4,176
Full day	£48.25	£84.75	Years 3 & 4: £5,106
Afternoon including lunch	£45.00	£45.00	Years 5 & 6: £6,348

\* up to 15 hours

Extended Day Activities for Nursery through Year 3 are charged at £7.75 per hour or part thereof.

	<b>MIDDLE SCHOOL (Yrs 7 &amp; 8)</b>	<b>SENIOR SCHOOL (Yrs 9 - 11)</b>	<b>SIXTH FORM CONCESSION (students from Yr 11)</b>	<b>SIXTH FORM (New Joiners)</b>
<b>DAY</b>	£9,066	£9,564	£9,564	£10,104
<b>FLEXI 3 DAY BOARDING</b>	£11,322	£12,114	£12,114	£12,876
<b>WEEKLY BOARDING</b>	£12,438	£13,686	£13,686	£14,586
<b>FULL BOARDING</b>	£13,182	£14,994	£14,994	£15,768

**VAT: All fees are inclusive of VAT where applicable.**

**Registration fee:** A non-returnable Registration Fee of £250 is payable.

**Deposits:** An Acceptance Deposit is payable by all parents when the signed Acceptance Form is submitted. The deposit is not refundable if your child does not take up a place at the School. When your child has left the school, the residue of the deposit will be repaid after deduction of all sums due. Full details are contained in the School's Terms and Conditions of entry.

An Additional Deposit is also payable by parents who are considered normally resident outside the UK (details available upon request).

**Acceptance Deposit:** Nursery - £300 | Reception and above - £1,000

Deferred Year 9 entry: £2,000 (£1,000 of which will be refunded against the first term's fees)

**Overseas Deposit:** Details available upon request

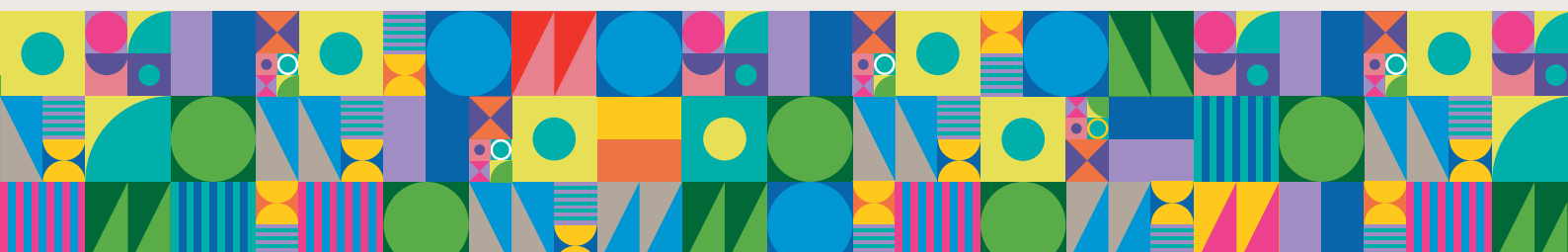
**Full boarding fees:** These include most weekend activities though some trips may be charged.

**Flexi 3-day boarding:** Students in Years 7-13 may board for 3 nights per week. Students must board on the same nights each week and do so on a termly basis, payable in advance.

**Occasional boarding:** Day students in Years 7-9 may board up to a total number of nights equivalent to two nights per week for that specific term. Day students in Years 10-13 may board up to a total number of nights equivalent to one night per week for that specific term. The occasional boarding rate is £87.60 per night; this charge is not inclusive of weekend activities.

**Fees due and notice:** Fee accounts are payable in advance of the first day of each term and in accordance with the School's Terms and Conditions of entry. Parents jointly and severally agree to pay the fees applicable to each Term directly to the School. Direct debit is the School's preferred method for collecting termly fees.

**At least one whole term's written notice must be given if withdrawing a student from Frensham or changing status from boarding (full, weekly and flexi 3-day boarders) to day student; otherwise, fees-in-lieu-of-notice will be due.** Where a charge is disputed an email should be sent in the first instance to the Fees Administrator (FeesAdmin@frensham.org) to raise the query. An additional fee will be payable for undisputed amounts not paid by the due date; this will be accrued on a daily basis at the statutory interest rate of 8 per cent a year above the Bank of England base rate.



## OUR SCHOOL FEES 2024-25 (inc VAT) PER TERM FROM JANUARY 2025

2/2

**Expenses Covered:** The fees cover most classroom stationery, lectures, arts materials and books. Additional charges may be made for trips, some creative arts (particularly at GCSE and A level), some revision material, some transportation and use of non-school sports facilities. Parents will be made aware of additional charges before these are added to bills. Individual music lessons and external examination fees are extra. The fees cover all routine meals for boarders and lunches for day students in term time; additional meals taken by day students will be charged at a cost of £5.00.

**Music and SEN Support:** Payment for music lessons and SEN support is to be made direct to the self-employed teachers.

**Medical & Dental Attention:** British citizens are covered for medical services under National Health Service (NHS) arrangements. Entitlement to NHS care for Nationals of other countries is dependent on the type of visa obtained. If a pupil is not eligible for NHS care, you could therefore be charged by doctors, dentists, hospitals, pharmacists etc., for supplies and services provided. The School does not participate in any scheme providing for students' dental, personal health or accident; parents are expected to make their own choices and independent arrangements in these respects. The services of a trained counsellor are available at the School; initial sessions are free of charge, but longer-term cases will be charged as an extra.

**Personal Effects Insurance:** Parents must ensure that personal possessions at School are insured adequately; these are not covered by the School's insurance. This can normally be done by an extension to family household contents policies..

**Teaching English as a Second Language (TESL) Fee:** An annual fee of £3,750 is payable for those international students for whom English is not their primary language and who, in the School's opinion, require additional support in this area. This fee covers a maximum of 2 hours of lessons per week for the year. Parents will be advised if further lessons are required at additional cost.

**International Students:** A charge of £500 related to the cost of visa applications will be added to the first term's fees.

**Boarding Experience:** To provide day students and parents with a better understanding of boarding, a two-week boarding experience is available for a charge of £600, once in a student's time at the School. Details and dates are available from the Finance office.

**Sibling Discount:** Where elder siblings have completed, or will complete, a phase of education at Frensham Heights, then third and subsequent children will receive a 10% discount on fees throughout their time at the School.

**Transport:** Details of the routes and costs are available on the School's website.

**All school accounts and charges are payable in sterling on a UK bank.** The School's preferred method of collecting termly fees is by direct debit.

**The School's bank details are as follows. These details will not be changed under any circumstances without prior notification from the School:**

HSBC Bank plc, 30 Princes Mead Shopping Centre, Farnborough, Hampshire GU14 6YB  
Account name: Frensham Heights Educational Trust Ltd  
Account Number: 01511270  
Sort code: 40-21-05  
IBAN number: GB80HBUK40210501511270  
SWIFT and/or BIC code: HBUKGB4112U

School fees are subject to change, the fees shown are for the 2024-2025 academic year.

Revised 18 December 2024



Frensham Heights School | Rowledge, Farnham, Surrey, GU10 4EA  
Tel 01252 792299 | [bursar@frensham.org](mailto:bursar@frensham.org) | [www.frensham.org](http://www.frensham.org)  
Registered Charity No.: 312052

