

OUR SCHOOL FEES PER TERM FROM SEPT 2022

1/2

NURSERY (FEES PER SESSION)

EYFE Session (8.30am to 11.30am)
Morning including lunch
Full day
Afternoon including lunch

* up to 15 hours

Extended Day Activities for Nursery through Year 3 are charged at £6.50 per hour or part thereof.

EYFE SCHEME

Free*
£22.00
£41.50
£38.50

OUTSIDE EYFE

£32.00
£53.00
£73.00
£38.50

JUNIOR SCHOOL

Reception: £2,555
Years 1 & 2: £3,120
Year 3: £3,735
Year 4: £3,820
Years 5 & 6: £4,725

	MIDDLE SCHOOL (Yrs 7 & 8)	SENIOR SCHOOL (Yrs 9 - 11)	SIXTH FORM CONCESSION (students from Yr 11)	SIXTH FORM (New Joiners)
DAY	£6,780	£7,115	£7,115	£7,555
FLEXI 3 DAY BOARDING	£8,430	£8,930	£8,930	£9,535
WEEKLY BOARDING	£9,255	£10,140	£10,140	£10,855
FULL BOARDING	£9,860	£11,160	£11,160	£11,790

Registration fee: A non-returnable Registration Fee of £150 is payable.

Deposits: An Acceptance Deposit is payable by all parents when the signed Acceptance Form is submitted. The deposit is not refundable if your child does not take up a place at the School. However, should the School fill the specific vacancy created by your child's withdrawal, the School will refund the deposit less an administration charge.

An Additional Deposit is also payable by parents who are considered normally resident outside the UK.

When the student has left the school, the residue of the deposit(s) will be paid after deduction of all sums due. Full details are contained in the School's Terms and Conditions of entry.

Acceptance Deposit: Nursery - £300 | Reception and above - Day Students £500 | Boarders £1,000
Deferred Year 9 entry: Day Students £1,000 | Boarders £1,500

Overseas Deposit: Equal to one term's boarding fees

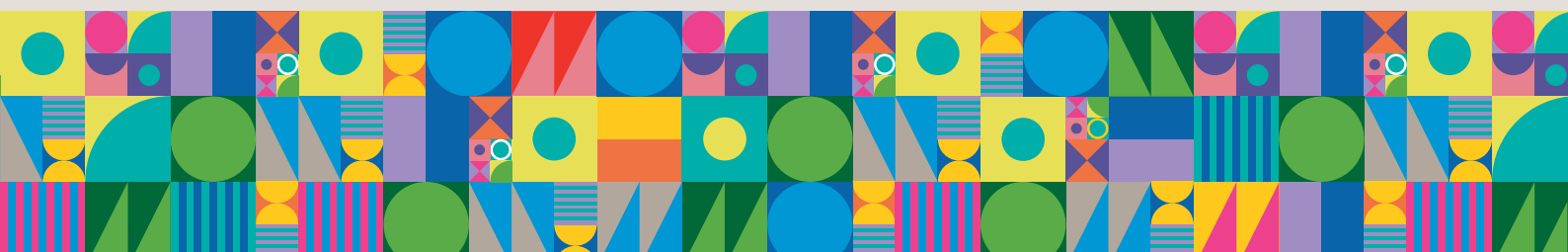
Full boarding fees: These include most weekend activities, though some trips may be charged.

Flexi 3-day boarding: Students in Years 7-13 may board for 3 nights per week. Students must board on the same nights each week and do so on a termly basis, payable in advance.

Occasional boarding: Day students in Years 7-9 may board up to a total number of nights equivalent to two nights per week for that specific term. Day students in Years 10-13 may board up to a total number of nights equivalent to one night per week for that specific term. The occasional boarding rate is £60 per night; this charge is not inclusive of weekend activities.

Fees due and notice: Fee accounts are payable in advance of the first day of each term and in accordance with the School's Terms and Conditions of entry. Parents jointly and severally agree to pay the fees applicable to each Term directly to the School. In exceptional circumstances, and where a separate agreement has been made between the Parents and the School for the deferment of payment of fees, the fees for each Term are due and payable as cleared funds before the commencement of the School Term to which they relate. If an item on the fee invoice is under query, the balance of that fee invoice must be paid.

At least one whole term's written notice must be given if withdrawing a student from Frensham or changing their status from boarding (either full, weekly and flexi 3-day boarders) to day student; otherwise fees-in-lieu-of-notice will be due. Where a charge is disputed the amount in issue should be deducted from the fee account and a note sent to the Director of



OUR SCHOOL FEES PER TERM FROM SEPT 2022

2/2

Finance to explain. An additional fee will be payable for undisputed amounts not paid by the due date; this will be accrued on a daily basis at the statutory interest rate of 8 per cent a year above the Bank of England base rate.

Expenses Covered: The fees cover most classroom stationery, lectures, arts materials and books. Additional charges may be made for trips, some creative arts (particularly at GCSE and A level), some revision material, some transportation and use of non-school sports facilities. Parents will be made aware of additional charges before these are added to bills. Individual music lessons, external examination and individual invigilator fees are extra. The fees cover all routine meals for boarders and lunches for day students in term time; additional meals taken by day students will be charged at a cost of £4.25.

Music and SEN Support: Payment for music lessons and SEN support is to be made direct to the self-employed teachers.

Medical & Dental Attention: British citizens are covered for medical services under National Health Service (NHS) arrangements. Entitlement to NHS care for Nationals of other countries is dependent on the type of visa obtained. If a pupil is not eligible for NHS care, you could therefore be charged by doctors, dentists, hospitals, pharmacists etc., for supplies and services provided. The School does not participate in any scheme providing for students' personal health or accident; parents are expected to make their own choices and independent arrangements in these respects. All boarders are covered under the 'Denplan for Schools' scheme; the cost is included in the boarding fees. The scheme provides cover in the event of a dental injury or dental emergency, whether at school or at home. The services of a trained counsellor are available at the School; initial sessions are free of charge but longer term cases will be charged as an extra.

Personal Effects Insurance: Parents must ensure that personal possessions at School are insured adequately; these are not covered by the School's insurance. This can normally be done by an extension to family household contents policies.

Teaching English as a Second Language (TESL) Fee: An annual fee of £3,225 is payable for those international students for whom English is not their primary language and who, in the School's opinion, require additional support in this area. This fee covers a maximum of 2 hours of lessons per week for the year. Parents will be advised if further lessons are required at additional cost.

International Students: The costs associated with visa applications will be added to the first term's fees.

Boarding Experience: To provide day students and parents with a better understanding of boarding, a two-week boarding experience is available for a charge of £500, once in a student's time at the School. Details and dates are available from the Bursar's office.

Sibling Discount: Where elder siblings have completed, or will complete, a phase of education at Frensham Heights, then third and subsequent children will receive a 10% discount on fees throughout their time at the School.

Transport: Details of the routes and costs are available on the School's website.

All school accounts and charges are payable in sterling on a UK bank. The School's preferred method of collecting termly fees is by direct debit.

The School's bank details:

HSBC Bank plc, 33 The Borough, Farnham Surrey GU9 7NJ, UK

Account name: Frensham Heights Educational Trust Ltd

Account Number: 01511270

Sort code: 40-21-05

IBAN number: GB80HBUK40210501511270

SWIFT and/or BIC code: HBUKGB4112U

Revised 30 March 2022



Frensham Heights School | Rowledge, Farnham, Surrey, GU10 4EA

Tel 01252 792299 | COO@frensham.org | www.frensham.org

Registered Charity No.: 312052

